

**DEPARTMENT OF PUBLIC SAFETY AND CORRECTIONS**  
**POPULATION TRENDS - RAW DATA**  
**1989 - 2015**

YEAR		STATE FACILITIES	LOCAL FACILITIES	CONTRACT TWP	TOTAL CUSTODY POPULATION			Cause of Significant Change
1989	JAN	12139	4110		16249			
	FEB	12108	3811		15919	-330	-2.03%	
	MAR	12152	3826		15978	59	0.37%	
	APR	12168	3996		16164	186	1.16%	
	MAY	12183	4102		16285	121	0.75%	
	JUN	12256	4233		16489	204	1.25%	Avozelles Corr. Opens
	JUL	12253	4309		16562	73	0.44%	
	AUG	12439	4037		16476	-86	-0.52%	
	SEP	12989	3791		16780	304	1.85%	
	OCT	13067	3893		16960	180	1.07%	
	NOV	13195	3977		17172	212	1.25%	
	DEC	13190	4078		17268	96	0.56%	
1990	JAN	13176	4153		17329	61	0.35%	
	FEB	13230	4295		17525	196	1.13%	
	MAR	13263	4362		17625	100	0.57%	Winn Corr. Opens
	APR	13605	4154		17759	134	0.76%	
	MAY	13802	4194		17996	237	1.33%	
	JUN	13861	4305		18166	170	0.94%	
	JUL	13881	4466		18347	181	1.00%	
	AUG	13858	4494		18352	5	0.03%	
	SEP	13865	4588		18453	101	0.55%	
	OCT	13910	4710		18620	167	0.91%	
	NOV	14009	4689		18698	78	0.42%	
	DEC	14079	4720		18799	101	0.54%	Allen Corr. Opens
1991	JAN	14298	4334		18632	-167	-0.89%	
	FEB	14403	4319		18722	90	0.48%	
	MAR	14504	4264		18768	46	0.25%	
	APR	14605	4247		18852	84	0.45%	
	MAY	14670	4270		18940	88	0.47%	
	JUN	14771	4281		19052	112	0.59%	
	JUL	14806	4326		19132	80	0.42%	
	AUG	14778	4431		19209	77	0.40%	Perdiem inc. to \$21/day
	SEP	14732	4585		19317	108	0.56%	
	OCT	14844	4857		19701	384	1.99%	
	NOV	14882	4976		19858	157	0.80%	
	DEC	14970	5047		20017	159	0.80%	
1992	JAN	14975	5011		19986	-31	-0.15%	
	FEB	15036	5256		20292	306	1.53%	
	MAR	15063	5312		20375	83	0.41%	
	APR	15112	5233		20345	-30	-0.15%	
	MAY	15088	5369		20457	112	0.55%	
	JUN	15114	5454		20568	111	0.54%	
	JUL	15097	5351		20448	-120	-0.58%	DOC begins prison expansion
	AUG	15270	5279		20549	101	0.49%	
	SEP	15486	5059		20545	-4	-0.02%	
	OCT	15740	4952		20692	147	0.72%	
	NOV	15968	4975		20943	251	1.21%	
	DEC	16152	4855		21007	64	0.31%	
1993	JAN	16233	4663		20896	-111	-0.53%	
	FEB	16383	4647		21030	134	0.64%	
	MAR	16502	4739		21241	211	1.00%	
	APR	16385	5065		21450	209	0.98%	
	MAY	16362	5170		21532	82	0.38%	
	JUN	16459	5291		21750	218	1.01%	
	JUL	16464	5452		21916	166	0.76%	
	AUG	16288	5799		22087	171	0.78%	LSP Camps A & H closed
	SEP	16075	6098		22173	86	0.39%	
	OCT	16144	6277		22421	248	1.12%	
	NOV	16181	6458		22639	218	0.97%	
	DEC	16141	6422		22563	-76	-0.34%	

YEAR		STATE FACILITIES	LOCAL FACILITIES	CONTRACT TWP	TOTAL CUSTODY POPULATION			Cause of Significant Change
1994	JAN	16142	6390		22532	-31	-0.14%	
	FEB	16197	6664		22861	329	1.46%	
	MAR	16229	6703		22932	71	0.31%	
	APR	16283	6818		23101	169	0.74%	
	MAY	16300	6889		23189	88	0.38%	
	JUN	16224	7099		23323	134	0.58%	
	JUL	16241	7115		23356	33	0.14%	
	AUG	16281	7326		23607	251	1.07%	
	SEP	16132	7445		23577	-30	-0.13%	
	OCT	16140	7766		23906	329	1.40%	
	NOV	16093	8038		24131	225	0.94%	
	DEC	16071	8149		24220	89	0.37%	
1995	JAN	16018	8081		24099	-121	-0.50%	
	FEB	16225	8228		24453	354	1.47%	
	MAR	16203	8243		24446	-7	-0.03%	
	APR	16184	8318		24502	56	0.23%	
	MAY	16166	8604		24770	268	1.09%	
	JUN	16266	8601		24867	97	0.39%	
	JUL	16234	8770		25004	137	0.55%	
	AUG	16383	8751		25134	130	0.52%	
	SEP	16497	8741		25238	104	0.41%	
	OCT	16803	8799		25602	364	1.44%	
	NOV	16986	8683		25669	67	0.26%	
	DEC	17077	8600		25677	8	0.03%	ALC, AVC, WNC operational capacities inc. to 1474 ea.
1996	JAN	16975	8472		25447	-230	-0.90%	
	FEB	17246	8480		25726	279	1.10%	
	MAR	17407	8471		25878	152	0.59%	
	APR	17539	8682		26221	343	1.33%	
	MAY	17470	8786		26256	35	0.13%	
	JUN	17535	8752		26287	31	0.12%	
	JUL	17516	8914		26430	143	0.54%	
	AUG	17532	8913		26445	15	0.06%	
	SEP	17553	8951		26504	59	0.22%	
	OCT	17600	9012		26612	108	0.41%	
	NOV	17630	9264		26894	282	1.06%	
	DEC	17635	9364		26999	105	0.39%	
1997	JAN	17597	9256		26853	-146	-0.54%	
	FEB	17838	9243		27081	228	0.85%	
	MAR	17857	9587		27444	363	1.34%	
	APR	17797	9984		27781	337	1.23%	
	MAY	17727	10305		28032	251	0.90%	
	JUN	17856	10353		28209	177	0.63%	
	JUL	18014	10540		28554	345	1.22%	
	AUG	18174	10677		28851	297	1.04%	
	SEP	18384	10702		29086	235	0.81%	
	OCT	18519	10763		29282	196	0.67%	
	NOV	18529	10868		29397	115	0.39%	
	DEC	18470	10795		29265	-132	-0.45%	
1998	JAN	18559	10784		29343	78	0.27%	
	FEB	18554	11294		29848	505	1.72%	
	MAR	18565	11517		30082	234	0.78%	
	APR	18606	11717		30323	241	0.80%	
	MAY	18616	11825		30441	118	0.39%	
	JUN	18679	12228		30907	466	1.53%	
	JUL	18705	12419		31124	217	0.70%	
	AUG	18819	12500		31319	195	0.63%	
	SEP	18880	12701		31581	262	0.84%	
	OCT	19001	12976		31977	396	1.25%	
	NOV	19004	13267		32271	294	0.92%	
	DEC	19016	13211		32227	-44	-0.14%	

YEAR		STATE FACILITIES	LOCAL FACILITIES	CONTRACT TWP	TOTAL CUSTODY POPULATION		Cause of Significant Change
1999	JAN	19053	13364		32417	190	0.59%
	FEB	19072	13364		32436	19	0.06%
	MAR	19259	13214		32473	37	0.11%
	APR	19350	13380		32730	257	0.79%
	MAY	19129	13897		33026	296	0.90%
	JUN	19320	14099		33419	393	1.19%
	JUL	19320	14099		33419	0	0.00%
	AUG	19239	14170		33409	-10	-0.03%
	SEP	19278	14365		33643	234	0.70%
	OCT	19281	14409		33690	47	0.14%
	NOV	19267	14649		33916	226	0.67%
	DEC	19174	14838		34012	96	0.28%
2000	JAN	19292	14671		33963	-49	-0.14%
	FEB	19325	15081		34406	443	1.30%
	MAR	19406	15300		34706	300	0.87%
	APR	19403	15158		34561	-145	-0.42%
	MAY	19259	15259		34518	-43	-0.12%
	JUN	19510	15194		34704	186	0.54%
	JUL	19541	15027		34568	-136	-0.39%
	AUG	19443	15285		34728	160	0.46%
	SEP	19478	15412		34890	162	0.47%
	OCT	19440	15596		35036	146	0.42%
	NOV	19515	15596		35111	75	0.21%
	DEC	19450	15504		34954	-157	-0.45%
2001	JAN	19476	15397		34873	-81	-0.23%
	FEB	19651	15537		35188	315	0.90%
	MAR	19611	15559		35170	-18	-0.05%
	APR	19543	15742		35285	115	0.33%
	MAY	19534	15776		35310	25	0.07%
	JUN	19528	15901		35429	119	0.34%
	JUL	19663	15670		35333	-96	-0.27%
	AUG	19603	15707		35310	-23	-0.07%
	SEP	19604	15825		35429	119	0.34%
	OCT	19929	16063		35992	563	1.59%
	NOV	19929	15995		35924	-68	-0.19%
	DEC	19949	15874		35823	-101	-0.28%
2002	JAN	19547	16114		35661	-162	-0.45%
	FEB	19587	16063		35650	-11	-0.03%
	MAR	19601	16138		35739	89	0.25%
	APR	19593	16162		35755	16	0.04%
	MAY	19593	16219		35812	57	0.16%
	JUN	19593	16242		35835	23	0.06%
	JUL	19907	16252		36159	324	0.90%
	AUG	19911	16251		36162	3	0.01%
	SEP	19911	16215		36126	-36	-0.10%
	OCT	19927	16145		36072	-54	-0.15%
	NOV	19830	15973		35803	-269	-0.75%
	DEC	19830	16048		35878	75	0.21%
2003	JAN	19547	15927		35474	-404	-1.13%
	FEB	19587	16029		35616	142	0.40%
	MAR	19601	16050		35651	35	0.10%
	APR	19593	16222		35815	164	0.46%
	MAY	19639	16248		35887	72	0.20%
	JUN	19575	16321		35896	9	0.03%
	JUL	19509	16512		36021	125	0.35%
	AUG	19504	16525		36029	8	0.02%
	SEP	19425	16782		36207	178	0.49%
	OCT	19405	16798		36203	-4	-0.01%
	NOV	19403	16726		36129	-74	-0.20%
	DEC	19318	16547		35865	-264	-0.73%

YEAR	STATE FACILITIES	LOCAL FACILITIES	CONTRACT TWP	TOTAL CUSTODY POPULATION			Cause of Significant Change
2004	JAN	19326	16559	35885	20	0.06%	Due to Hurricanes Katrina (8/29/05) and Rita(9/24/05), evacuees were taken into our population.
	FEB	19321	16569	35890	5	0.01%	Aug '05: Of the 25,378 in state facilities, 3,814 are Pre-trial Non-state offenders/arrestees
	MAR	19393	16776	36169	279	0.78%	Aug '05: Of the 16,819 in local facilities, 1309 are Pre-trial Non-state offenders/arrestees
	APR	19530	16886	36416	247	0.68%	Sep '05: Of the 25,437 in state facilities, 920 are physically located in Bureau of Prisons in Florida; 4,298 are Pre-trial Non-state offenders/arrestees
	MAY	19457	17152	36609	193	0.53%	Sep '05: Of the 17,953 in local facilities, 1,655 are Pre-trial Non-state offenders/arrestees
	JUN	19381	17147	36528	-81	-0.22%	Oct '05: Of the 23,045 in state facilities, 777 are physically located in Bureau of Prisons in Florida; 2,771 are Pre-trial Non-state offenders/arrestees
	JUL	19365	17110	36475	-53	-0.15%	Oct '05: Of the 17,558 in local facilities, 1,396 are Pre-trial Non-state offenders/arrestees
	AUG	19321	17265	36586	111	0.30%	Nov '05: Of the 22,065 in state facilities, 579 are physically located in Bureau of Prisons in Florida 2,084 are Pre-trial Non-state offenders/arrestees
	SEP	19400	17164	36564	-22	-0.06%	Nov '05: Of the 17,581 in local facilities, 1,474 are Pre-trial Non-state offenders/arrestees
	OCT	19341	17409	36750	186	0.51%	Dec '05: Of the 21,583 in state facilities, 529 are physically located in Bureau of Prisons in Florida 1,682 are Pre-trial Non-state offenders/arrestees
	NOV	19276	17422	36698	-52	-0.14%	Dec '05: Of the 17,456 in local facilities, 1,422 are Pre-trial Non-state offenders/arrestees
	DEC	19265	17269	36534	-164	-0.45%	
2005	JAN	19300	17066	36366	-168	-0.46%	Jan '06: Of the 20,501 in state facilities, 289 are physically located in Bureau of Prisons in Florida 703 are Pre-trial Non-state offenders/arrestees
	FEB	19439	17378	36817	451	1.24%	Jan '06: Of the 17,780 in local facilities, 1,838 are Pre-trial Non-state offenders/arrestees
	MAR	19569	17327	36896	79	0.21%	Feb '06: Of the 20,255 in state facilities, 532 are Pre-trial Non-state offenders/arrestees
	APR	19435	17431	36866	-30	-0.08%	Feb '06: Of the 17,609 in local facilities, 1,475 are Pre-trial Non-state offenders/arrestees
	MAY	19484	17708	37192	326	0.88%	Mar '06: Of the 20,344 in state facilities, 753 are Pre-trial Non-state offenders/arrestees
	JUN	19591	17645	37236	44	0.12%	Mar '06: Of the 17,327 in local facilities, 1,347 are Pre-trial Non-state offenders/arrestees
	JUL	19589	17685	37274	38	0.10%	Apr '06: Of the 20,113 in state facilities, 474 are Pre-trial Non-state offenders/arrestees
	AUG	25378	16819	42197	4923	13.21%	Apr '06: Of the 16,887 in local facilities, 1,010 are Pre-trial Non-state offenders/arrestees
	SEP	25437	17953	43390	1193	2.83%	May '06: Of the 20,042 in state facilities, 320 are Pre-trial Non-state offender/arrestees
	OCT	23045	17558	40603	-2787	-6.42%	May '06: Of the 16,525 in local facilities, 584 are Pre-trial Non-state offenders/arrestees
	NOV	22065	17581	39646	-957	-2.36%	June '06: Of the 20,341 in state facilities, 381 are Pre-trial Non-state offenders/arrestees
	DEC	21583	17456	39039	-607	-1.53%	June '06: Of the 16,182 in local facilities, 395 are Pre-trial Non-state offenders/arrestees
2006	JAN	20501	17780	38281	-758	-1.94%	July '06: Of the 20,396 in state facilities, 446 are Pre-trial Non-state offenders/arrestees
	FEB	20255	17609	37864	-417	-1.09%	July '06: Of the 16,112 in local facilities, 396 are Pre-trial Non-state offenders/arrestees
	MAR	20344	17327	37671	-193	-0.51%	Aug '06: Of the 20,554 in state facilities, 528 are Pre-trial Non-state offenders/arrestees
	APR	20113	16887	37000	-671	-1.78%	Aug '06: Of the 16,044 in local facilities, 302 are Pre-trial Non-state offenders/arrestees
	MAY	20042	16525	36567	-433	-1.17%	Sept '06: Of the 20,539 in state facilities, 513 are Pre-trial Non-state offenders/arrestees
	JUN	20341	16182	36523	-44	-0.12%	Sept '06: Of the 16,171 in local facilities, 209 are Pre-trial Non-state offenders/arrestees
	JUL	20396	16112	36508	-15	-0.04%	Oct '06: Of the 20,799 in state facilities, 641 are Pre-trial Non-state Offenders/arrestees
	AUG	20554	16044	36598	90	0.25%	Oct '06: Of the 16,285 in local facilities, 117 are Pre-trial Non-state offenders/arrestees
	SEP	20539	16171	36710	112	0.31%	Nov '06: Of the 20,852 in state facilities, 624 are Pre-trial Non-state Offenders/arrestees
	OCT	20799	16285	37084	374	1.02%	Nov '06: Of the 16,268 in local facilities, 93 are Pre-trial Non-state offenders/arrestees
	NOV	20852	16268	37120	36	0.10%	Dec '06: Of the 20,815 in state facilities, 572 are Pre-trial Non-state offenders/arrestees
	DEC	20815	15995	36810	-310	-0.84%	Dec '06: Of the 15,995 in local facilities, 64 are Pre-trial Non-state offenders/arrestees
2007	JAN	20580	15901	36481	-329	-0.89%	Jan '07: Of the 20,580 in state facilities, 270 are Pre-trial Non-state offenders/arrestees
	FEB	20577	15942	36519	38	0.10%	Jan '07: Of the 15,942 in local facilities, 13 are Pre-trial Non-state offenders/arrestees
	MAR	20596	16066	36662	143	0.39%	Mar '07: Of the 20,596 in state facilities, 178 are Pre-trial Non-state offenders/arrestees
	APR	20795	16093	36888	226	0.62%	Mar '07: Of the 16,066 in local facilities, 13 are Pre-trial Non-state offenders/arrestees
	MAY	20772	16097	36869	-19	-0.05%	Apr '07: Of the 20,795 in state facilities, 231 are Pre-trial Non-state offenders/arrestees
	JUN	20,869	16121	36990	121	0.33%	Apr '07: Of the 16,093 in local facilities, 1 is a Pre-trial Non-state offender/arrestee
	JUL	20790	16,335	37125	135	0.36%	May '07: Of the 20,772 in state facilities, 217 are Pre-trial Non-state offenders/arrestees
	AUG	20750	16625	37375	250	0.67%	May '07: Of the 16,097 in local facilities, 1 is a Pre-trial Non-state offender/arrestee
	SEP	20700	16665	37365	-10	-0.03%	June '07: Of the 20,869 in state facilities, 203 are Pre-trial Non-state offenders/arrestees
	OCT	20600	17051	37651	286	0.77%	June '07: Of the 16,121 in local facilities, 1 is a Pre-trial Non-state offender/arrestee
	NOV	20632	17000	37632	-19	-0.05%	July '07: Of the 20,790 in state facilities, 214 are Pre-trial Non-state offenders/arrestees
	DEC	20461	17035	37496	-136	-0.36%	July '07: Of the 16,335 in local facilities, 1 is a Pre-trial Non-state offender/arrestee
2008	JAN	20507	17060	37567	71	0.19%	Aug '07: Of the 20,750 in state facilities, 181 are Pre-trial Non-state offenders/arrestees
	FEB	20575	17024	37599	32	0.09%	Aug '07: Of the 16,625 in local facilities, 1 is a Pre-trial Non-state offender/arrestee
	MAR	20537	17360	37897	298	0.79%	Oct '07: Of the 20,600 in state facilities, 173 are Pre-trial Non-state offenders/arrestees
	APR	20671	17168	37839	-58	-0.15%	Oct '07: Of the 17,051 in local facilities, 1 is a Pre-trial Non-state offender/arrestee
	MAY	20644	17322	37966	127	0.34%	Nov '07: Of the 20,632 in state facilities, 217 are Pre-trial Non-state offenders/arrestees
	JUN	20929	17347	38276	310	0.82%	Nov '07: Of the 17,000 in local facilities, 1 is a Pre-trial Non-state offender/arrestee
	JUL	20782	17,455	38237	-39	-0.10%	Dec '07: Of the 20,461 in state facilities, 198 are Pre-trial Non-state offenders/arrestees
	AUG	20887	17716	38603	366	0.96%	Dec '07: Of the 17,034 in local facilities, 1 is a Pre-trial Non-state offender/arrestee
	SEP	21673	17493	39166	563	1.46%	Jan '08: Of the 20,507 in state facilities, 199 are physically located in Bureau of Prisons in Florida
	OCT	21199	17604	38803	-363	-0.93%	Jan '08: Of the 17,060 in local facilities, 1 is a Pre-trial Non-state offenders/arrestees
	NOV	20997	17559	38556	-247	-0.64%	Jan '08: Of the 20,575 in state facilities, 200 are Pre-trial Non-state offenders/arrestees
	DEC	20857	17371	38228	-328	-0.85%	Feb '08: Of the 17,024 in local facilities, 1 is a Pre-trial Non-state offenders/arrestees
							Mar '08: Of the 20537 in state facilities, 144 are Pre-trial Non-state offenders/arrestees
							Mar '08: As of this month, local facilities are no longer housing Pre-trial Non-state offenders/arrestees
							Apr '08: Of the 20,671 in state facilities, 200 are Pre-trial Non-state offenders/arrestees
							May '08: Of the 20,644 in state facilities, 152 are Pre-trial Non-state offenders/arrestees
							June '08: Of the 20,622 in state facilities, 307 are Pre-trial Non-state offenders/arrestees
							July '08: Of the 20,782 in state facilities, 183 are Pre-trial Non-state offenders/arrestees

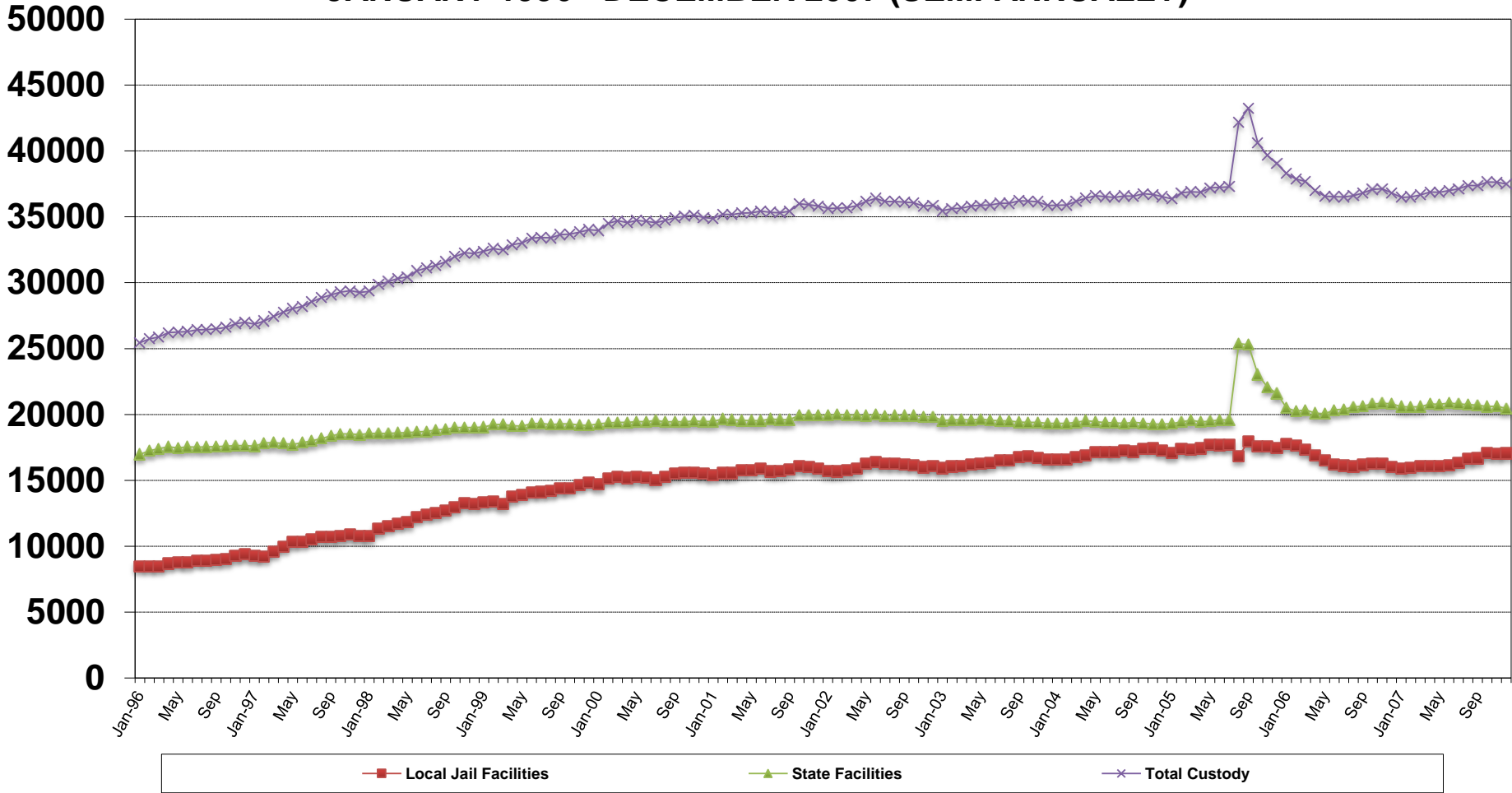
YEAR	STATE FACILITIES	LOCAL FACILITIES	CONTRACT TWP	TOTAL CUSTODY POPULATION	Cause of Significant Change		
2009	JAN	19698	17565	1111*	38374	146 0.38%	<p><b>Aug '08:</b> Of the 20,887 in state facilities, 193 are Pre-trial Non-state offenders/arrestees</p> <p><b>Sept '08:</b> Of the 21,673 in state facilities, 1,199 are Pre-trial Non-state offenders/arrestees</p> <p><b>Oct. '08:</b> Of the 21,199 in state facilities, 618 are Pre-trial Non-state offenders/arrestees</p> <p><b>Nov. '08:</b> Of the 20,997 in state facilities, 615 are Pre-trial Non-state offenders/arrestees</p> <p><b>Dec. '08:</b> Of the 20,857 in state facilities, 577 are Pre-trial Non-state offenders/arrestees</p> <p>Ending of George Washington University Projections</p> <p>*Effective 1/1/09 Budgeted projections have been used and contract transitional work program separated out from State Facilities.</p>
	FEB	19802	17683	1110	38595	221 0.58%	
	MAR	19868	17988	1123	38979	384 0.99%	
	APR	19266	18298	1161	38725	-254 -0.65%	
	MAY	19252	18533	1129	38914	189 0.49%	
	JUN	19301	18420	1065	38786	-128 -0.33%	
	JUL	19187	18723	1099	39009	223 0.57%	
	AUG	19003	19350	1091	39444	435 1.12%	
	SEP	19013	19634	1079	39726	282 0.71%	
	OCT	19003	19923	1038	39964	238 0.60%	
	NOV	19024	19869	1034	39927	-37 -0.09%	
	DEC	18896	19891	993	39780	-147 -0.37%	
2010	JAN	18774	20059	994	39827	47 0.12%	
	FEB	18697	20207	981	39885	58 0.15%	
	MAR	18868	20201	1007	40076	191 0.48%	
	APR	18928	20044	1016	39988	-88 -0.22%	
	MAY	18863	20122	995	39980	-8 -0.02%	
	JUN	18963	19827	1032	39822	-158 -0.40%	
	JUL	18973	19651	1055	39679	-143 -0.36%	
	AUG	18944	19865	1104	39913	234 0.59%	
	SEP	19103	19964	1126	40193	280 0.70%	
	OCT	19041	19675	1118	39834	-359 -0.89%	
	NOV	19070	19410	1138	39618	-216 -0.54%	
	DEC	19008	19287	1096	39391	-227 -0.57%	
2011	JAN	18983	19373	1120	39476	85 0.22%	<p><b>May '11:</b> Threat of the flooding of the Mississippi River occurred on 5/9/11, LSP offender evacuated to other state facilities, therefore intakes from parish prisons were suspended weeks.</p>
	FEB	18978	19460	1150	39588	112 0.28%	
	MAR	18896	19759	997	39652	64 0.16%	
	APR	18628	20016	1023	39667	15 0.04%	
	MAY	18137	20641	988	39766	99 0.25%	
	JUN	17980	20709	994	39683	-83 -0.21%	
	JUL	18269	20335	1006	39610	-73 -0.18%	
	AUG	18690	20169	982	39841	231 0.58%	
	SEP	18779	20296	1004	40079	238 0.60%	
	OCT	18786	20334	1005	40125	46 0.11%	
	NOV	18843	20299	999	40141	16 0.04%	
	DEC	18843	19892	974	39709	-432 -1.08%	
2012	JAN	18825	20014	989	39828	119 0.30%	
	FEB	18818	20314	976	40108	280 0.70%	
	MAR	18765	20684	971	40420	312 0.78%	
	APR	18732	20630	959	40321	-99 -0.24%	
	MAY	18561	20988	989	40538	217 0.54%	
	JUN	18236	21230	994	40460	-78 -0.19%	
	JUL	18124	21257	1005	40386	-74 -0.18%	
	AUG	18236	21063	976	40275	-111 -0.27%	
	SEP	18271	21289	1008	40568	293 0.73%	
	OCT	18194	21317	1008	40519	-49 -0.12%	
	NOV	18216	21256	979	40451	-68 -0.17%	
	DEC	18599	20624	947	40170	-281 -0.69%	
2013	JAN	18611	20466	962	40039	-131 -0.33%	
	FEB	18687	20446	963	40096	57 0.14%	
	MAR	18671	20413	941	40025	-71 -0.18%	
	APR	18666	20305	959	39930	-95 -0.24%	
	MAY	18604	20409	928	39941	11 0.03%	
	JUN	18703	20315	908	39926	-15 -0.04%	
	JUL	18870	19860	913	39643	-283 -0.71%	
	AUG	18828	19854	977	39659	16 0.04%	
	SEP	18894	19867	995	39756	97 0.24%	
	OCT	18837	19833	1022	39692	-64 -0.16%	
	NOV	18842	19693	1017	39552	-140 -0.35%	
	DEC	18913	19393	993	39299	-253 -0.64%	

YEAR		STATE FACILITIES	LOCAL FACILITIES	CONTRACT TWP	TOTAL CUSTODY POPULATION			Cause of Significant Change
2014	JAN	18923	19292	964	39179	-120	-0.31%	
	FEB	18992	19431	955	39378	199	0.51%	
	MAR	18802	19499	977	39278	-100	-0.25%	
	APR	18757	19429	957	39143	-135	-0.34%	
	MAY	18753	19531	950	39234	91	0.23%	
	JUN	18763	19366	933	39062	-172	-0.44%	
	JUL	18787	19301	935	39023	-39	-0.10%	
	AUG	18774	19475	963	39212	189	0.48%	
	SEP	18778	19491	942	39211	-1	0.00%	
	OCT	18853	19128	941	38922	-289	-0.74%	
	NOV	18900	18911	926	38737	-185	-0.48%	
	DEC	18787	18308	935	38030	-707	-1.83%	
2015	JAN	18767	18027	945	37739	-291	-0.77%	
	FEB	18611	17874	988	37473	-266	-0.70%	
	MAR	18601	18050	1000	37651	178	0.48%	
	APR	18247	18169	1036	37452	-199	-0.53%	
	MAY	18296	18086	1019	37401	-51	-0.14%	
	JUN	18256	18011	1033	37300	-101	-0.27%	
	JUL	18091	17794	1054	36939	-361	-0.97%	
	AUG	18093	17758	1059	36910	-29	-0.08%	
	SEP	18157	17653	1064	36874	-36	-0.10%	
	OCT	18321	17594	957	36872	-2	-0.01%	
	NOV	18425	17069	1101	36595	-277	-0.75%	
	DEC	18430	16877	1070	36377	-218	-0.60%	
2016	JAN	18,496	16973	1064	36533	156	0.43%	
	FEB	18,474	16977	1053	36504	-29	-0.08%	
	MAR	18,542	16872	1049	36463	-41	-0.11%	
	APR	18,622	16605	1027	36254	-209	-0.57%	
	MAY	18,567	16769	1054	36390	136	0.38%	
	JUN	18,612	16646	1022	36280	-110	-0.30%	
	JUL	15,314	19743	1065	36122	-158	-0.44%	Jul '16- ALC and WNC classed as local facilities
	AUG	14,230	20631	1034	35895	-227	-0.63%	Aug '16- Flooding caused evacuation of LCIW
	SEP	14,988	20238	969	36195	300	0.84%	
	OCT	15,095	20220	1020	36335	140	0.39%	
	NOV	15,174	19875	1008	36057	-278	-0.77%	
	DEC	15,162	19504	1016	35682	-375	-1.04%	
2017	JAN	15,191	19,549	962	35702	20	0.06%	
	FEB	15,098	19,320	1120	35538	-164	-0.46%	
	MAR	14,926	19,690	1152	35768	230	0.65%	
	APR	14,893	19,639	1168	35700	-68	-0.19%	
	MAY	14,868	19,819	1119	35806	106	0.30%	
	JUN	14,933	19,542	1107	35582	-224	-0.63%	
	JUL	14,882	19,540	1085	35507	-75	-0.21%	
	AUG	14,869	19,034	1079	34982	-525	-1.48%	Sept '17 ALC became a state facility
	SEP	15,725	18,211	1065	35001	19	0.05%	
	OCT	15,579	19,235	1010	35824	823	2.35%	
	NOV	15,188	17,819	1012	34019	-1805	-5.04%	
	DEC	15,152	17,594	993	33739	-280	-0.82%	
2018	JAN	15,210	17,339	944	33493	-246	-0.73%	
	FEB	15,218	17,256	976	33450	-43	-0.13%	
	MAR	15,219	17,055	995	33269	-181	-0.54%	
	APR	15,107	17,281	1029	33417	148	0.44%	
	MAY	15,097	17,262	1000	33359	-58	-0.17%	
	JUN	15,072	17,191	923	33186	-173	-0.52%	**Actual data depicted to this point
	JUL	15,524	19,955	1000	36479	3293	9.92%	Projected figures start
	AUG	15,524	19,973	1000	36497	18	0.05%	
	SEP	15,524	19,963	1000	36487	-10	-0.03%	
	OCT	15,524	20,031	1000	36555	68	0.19%	
	NOV	15,524	20,124	1000	36648	93	0.25%	
	DEC	15,524	20,196	1000	36720	72	0.20%	

YEAR		STATE FACILITIES	LOCAL FACILITIES	CONTRACT TWP	TOTAL CUSTODY POPULATION			Cause of Significant Change
2019	JAN	15,524	20,276	1,000	36,800	80	0.20%	
	FEB	15,524	20,316	1,000	36,840	40	0.11%	
	MAR	15,524	20,257	1,000	36,781	-58	-0.16%	
	APR	15,524	20,304	1,000	36,828	47	0.13%	
	MAY	15,524	20,343	1,000	36,867	39	0.11%	
	JUN	15,524	20,390	1,000	36,914	47	0.13%	
	JUL	15,524	20,416	1,000	36,940	26	0.07%	
	AUG	15,524	20,465	1,000	36,989	49	0.13%	
	SEP	15,524	20,443	1,000	36,967	-22	-0.06%	
	OCT	15,524	20,461	1,000	36,985	17	0.05%	
	NOV	15,524	20,484	1,000	37,008	23	0.06%	
	DEC	15,524	20,520	1,000	37,044	36	0.10%	
2020	JAN	15,524	20,534	1,000	37,058	14	0.04%	
	FEB	15,524	20,559	1,000	37,083	24	0.07%	
	MAR	15,524	20,498	1,000	37,022	-60	-0.16%	
	APR	15,524	20,516	1,000	37,040	17	0.05%	
	MAY	15,524	20,512	1,000	37,036	-3	-0.01%	
	JUN	15,524	20,527	1,000	37,051	15	0.04%	
	JUL	15,524	20,530	1,000	37,054	3	0.01%	
	AUG	15,524	20,527	1,000	37,051	-3	-0.01%	
	SEP	15,524	20,472	1,000	36,996	-55	-0.15%	
	OCT	15,524	20,488	1,000	37,012	16	0.04%	
	NOV	15,524	20,492	1,000	37,016	4	0.01%	
	DEC	15,524	20,506	1,000	37,030	14	0.04%	
2021	JAN	15,524	20,539	1,000	37,063	33	0.09%	
	FEB	15,524	20,560	1,000	37,084	21	0.06%	
	MAR	15,524	20,471	1,000	36,995	-89	-0.24%	
	APR	15,524	20,481	1,000	37,005	10	0.03%	
	MAY	15,524	20,487	1,000	37,011	6	0.02%	
	JUN	15,524	20,476	1,000	37,000	-11	-0.03%	
	JUL	15,524	20,465	1,000	36,989	-11	-0.03%	
	AUG	15,524	20,474	1,000	36,998	9	0.03%	
	SEP	15,524	20,374	1,000	36,898	-100	-0.27%	
	OCT	15,524	20,393	1,000	36,917	18	0.05%	
	NOV	15,524	20,379	1,000	36,903	-14	-0.04%	
	DEC	15,524	20,386	1,000	36,910	7	0.02%	
2022	JAN	15,524	20,397	1,000	36,921	12	0.03%	
	FEB	15,524	20,404	1,000	36,928	7	0.02%	
	MAR	15,524	20,417	1,000	36,941	13	0.04%	
	APR	15,524	20,425	1,000	36,949	8	0.02%	
	MAY	15,524	20,415	1,000	36,939	-10	-0.03%	
	JUN	15,524	20,424	1,000	36,948	9	0.02%	
	JUL	15,524	20,429	1,000	36,953	5	0.01%	
	AUG	15,524	20,417	1,000	36,941	-12	-0.03%	
	SEP	15,524	20,431	1,000	36,955	14	0.04%	
	OCT	15,524	20,437	1,000	36,961	6	0.02%	
	NOV	15,524	20,426	1,000	36,950	-11	-0.03%	
	DEC	15,524	20,428	1,000	36,952	2	0.01%	
2023	JAN	15,524	20,421	1,000	36,945	-7	-0.02%	
	FEB	15,524	20,410	1,000	36,934	-12	-0.03%	
	MAR	15,524	20,409	1,000	36,933	0	0.00%	
	APR	15,524	20,404	1,000	36,928	-5	-0.01%	
	MAY	15,524	20,400	1,000	36,924	-4	-0.01%	
	JUN	15,524	20,388	1,000	36,912	-12	-0.03%	
	JUL	15,524	20,387	1,000	36,911	-1	0.00%	
	AUG	15,524	20,379	1,000	36,903	-8	-0.02%	
	SEP	15,524	20,361	1,000	36,885	-18	-0.05%	
	OCT	15,524	20,341	1,000	36,865	-20	-0.06%	
	NOV	15,524	20,334	1,000	36,858	-6	-0.02%	
	DEC	15,524	20,323	1,000	36,847	-11	-0.03%	

# DEPARTMENT OF PUBLIC SAFETY AND CORRECTIONS POPULATION TRENDS JANUARY 1996 - DECEMBER 2007 (SEMI-ANNUALLY)

# Offenders



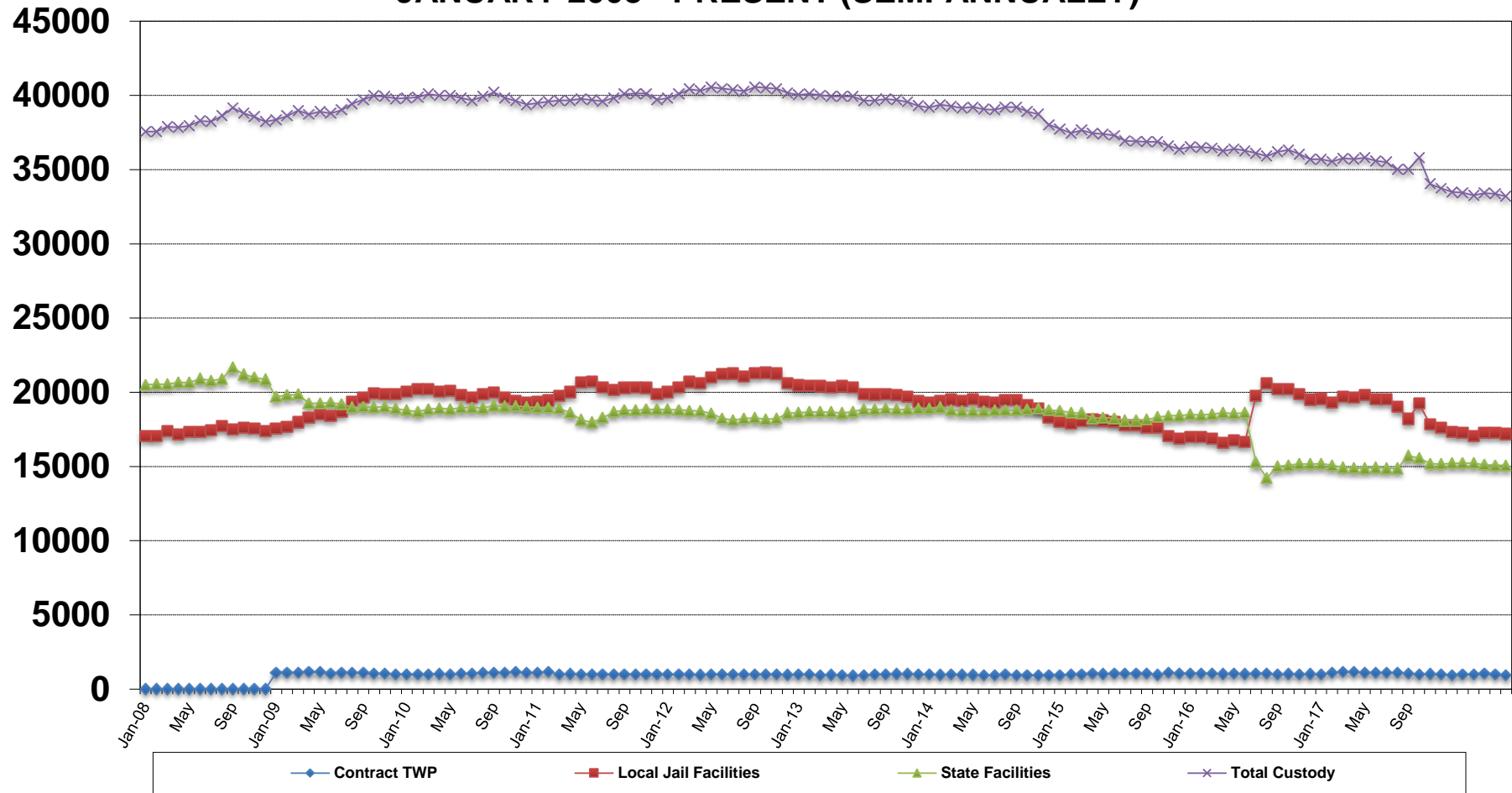
8/29/05 Hurricane Katrina occurred and Hurricane Rita occurred on 9/24/05, therefore parish jail evacuees were taken into DOC population.

\* Effective 10/26/01 current state offender populations based on operational capacity from Current State Offender Populations: Projected Expansions document plus the number of evacuees located in state institutions and parish jail



# DEPARTMENT OF PUBLIC SAFETY AND CORRECTIONS POPULATION TRENDS JANUARY 2008 - PRESENT (SEMI-ANNUALLY)

# Offenders



09/01/17 Allen Correctional Center became a state facility.

07/01/16 Allen Correctional Center and Winn Correctional Center became classified as local facilities.

05/09/11 Threat of the flooding of the Mississippi River occurred, LSP offenders were evacuated to other state facilities, therefore intakes from parish prisons were suspended for 7 weeks.

09/01/08 Hurricane Gustav occurred, therefore parish jail evacuees were taken into DOC population.

DATE: 6/27/2018  
DEPARTMENT OF PUBLIC SAFETY AND CORRECTIONS  
WEEKLY VACANCY AND RELEASE REPORT

INSTITUTIONS	OPERATIONAL CAPACITY	ASSIGNED	PHYSICALLY PRESENT	NON DOC/ PARISH HOLDS	CURRENT VACANCIES	PROJECTED RELEASES
<b>WARDEN'S REGION 1</b>						
DWCC *1	1174	1181	1181	0	-7	3
PROTECTION (WCC)	50	51	51	0	-1	0
<b>SUBTOTAL DWCC</b>	<b>1224</b>	<b>1232</b>	<b>1232</b>	<b>0</b>	<b>-8</b>	<b>3</b>
DCI	1378	1395	1393	2	-19	5
Youthful Offender	40	13	13	0	27	0
UNIT 3	242	231	231	0	11	0
UNIT 4	140	137	137	0	3	0
<b>SUBTOTAL DCI</b>	<b>1800</b>	<b>1776</b>	<b>1774</b>	<b>2</b>	<b>22</b>	<b>5</b>
EHCC - GEN. POP.	1510	1536	1528	0	-26	3
SKILLED NURSING UNIT *4	54	61	61	0	-7	0
HRDC	411	386	373	5	20	7
<b>SUBTOTAL HCC</b>	<b>1975</b>	<b>1983</b>	<b>1962</b>	<b>5</b>	<b>-13</b>	<b>10</b>
LSP	5684	5484	5470	4	196	4
NURSING UNIT 2	34	23	23	0	11	0
LSP/LCIW	5	5	5	1	-1	0
DEATH ROW	90	70	70	0	20	0
<b>SUBTOTAL LSP</b>	<b>5813</b>	<b>5582</b>	<b>5568</b>	<b>5</b>	<b>226</b>	<b>4</b>
<b>REGION 1 TOTAL</b>	<b>10812</b>	<b>10573</b>	<b>10536</b>	<b>12</b>	<b>227</b>	<b>22</b>
<b>WARDEN'S REGION 2</b>						
RLCC	1443	1609	1606	0	-166	4
LRDC	250	48	48	0	202	0
JLDCC	115	20	20	0	95	0
<b>SUBTOTAL RLCC</b>	<b>1808</b>	<b>1677</b>	<b>1674</b>	<b>0</b>	<b>131</b>	<b>4</b>
LCIW - GEN. POP. *7,8	0	0	0	0	0	0
FRDC *8	0	0	0	0	0	0
DEATH ROW *8	4	0	0	0	4	0
LCIW/EHCC	296	241	240	0	55	0
LCIW/JETSON	304	288	272	0	16	1
<b>SUBTOTAL LCIW</b>	<b>604</b>	<b>529</b>	<b>512</b>	<b>0</b>	<b>75</b>	<b>1</b>
RCC *6	1314	1319	1317	0	-5	3
STATE POLICE	155	145	145	0	10	0
ALC	872	829	822	0	43	0
WNC *10	1576	1439	1439	0	137	4
<b>REGION 2 TOTAL</b>	<b>6329</b>	<b>5938</b>	<b>5909</b>	<b>0</b>	<b>391</b>	<b>12</b>
<b>TOTAL INSTITUTION *10</b>	<b>15565</b>	<b>15072</b>	<b>15006</b>	<b>12</b>	<b>481</b>	<b>30</b>
<b>TOTAL WNC</b>	<b>1576</b>	<b>1439</b>	<b>1439</b>	<b>0</b>	<b>137</b>	<b>4</b>
<b>TOTAL</b>	<b>17141</b>	<b>16511</b>	<b>16445</b>	<b>12</b>	<b>618</b>	<b>34</b>
<b>CONTRACT TWP</b>						
CEDARWOOD MANOR	100	75	75	0	25	0
COF/MON-MEN	162	91	91	0	71	0
EFL TWP	75	66	66	0	9	3
LAFOURCHE TWP	174	136	136	0	38	0
WFL TWP	60	38	38	0	22	0
RAPIDES TWP *2	200	120	120	0	80	1
SOUTHWEST TWP	350	270	270	0	80	0
WBR TWP *3	185	127	127	0	58	0
<b>TOTAL CONTRACT TWP *5</b>	<b>1306</b>	<b>923</b>	<b>923</b>	<b>0</b>	<b>383</b>	<b>4</b>
<b>GRAND TOTAL</b>	<b>18447</b>	<b>17434</b>	<b>17368</b>	<b>12</b>	<b>1001</b>	<b>38</b>

\*1 Includes 1 WRDC.

\*2 RAP TWP Co-op agreement is for 245.

\*3 WBR TWP Co-op agreement is for 185.

\*4 Rated capacity is 64

\*5 Totals are included on the CFACILITY report

\*6 Physically present includes 0 intensive incarceration offenders

\*7 Physically present includes 0 intensive incarceration offenders

\*8 Currently empty due to evacuation because of flooding.

\*9 There are 27 Orleans non DOC offenders in the HSU dorm not included in Hunt totals

\*10 WNC is not included in the Total Institution counts